



LIVABLE COMMUNITIES  
THROUGH SUSTAINABLE TRANSPORTATION

# THE NASSAU HUB STUDY

ALTERNATIVES ANALYSIS / ENVIRONMENTAL IMPACT STATEMENT



## Stakeholder Committee Meeting

July 14, 2010





THE  
**NASSAU HUB STUDY**

---

ALTERNATIVES ANALYSIS / ENVIRONMENTAL IMPACT STATEMENT



# Welcome and Introductions



- **Lead Agency**

Federal Transit  
Administration (FTA)

- **Study Sponsor**

Nassau County

## **Funding Partners**

- FTA
- New York State  
Department of  
Transportation
- Nassau County

## **Consultant Team**

Jacobs (AA / EIS)

PB Americas (Program Management)



## Agenda

- Role of Stakeholder Committee
- Study History
- Study Overview and Work Plan
- Schedule
- Next Steps
- Q & A



## Role of Stakeholder Committee

- Liaison / Outreach Between Study Team and Member Organizations / Communities
- Review Study Materials and Provide Ongoing Input to Nassau County
- Meet at Key Milestones Throughout the Study



THE  
**NASSAU HUB STUDY**

---

ALTERNATIVES ANALYSIS / ENVIRONMENTAL IMPACT STATEMENT



# Study History



## Related Studies

- 1968 Hub Study
- 1996 Nassau Hub Economic Development Study
- 1998 Nassau Hub Study
- **2006 Major Investment Study (MIS)**
- NYMTC 2010-2035 Regional Transportation Plan (RTP)
- Nassau County Comprehensive Plan Update (Pending)
- LI Regional Planning Council Sustainability Plan (Pending)



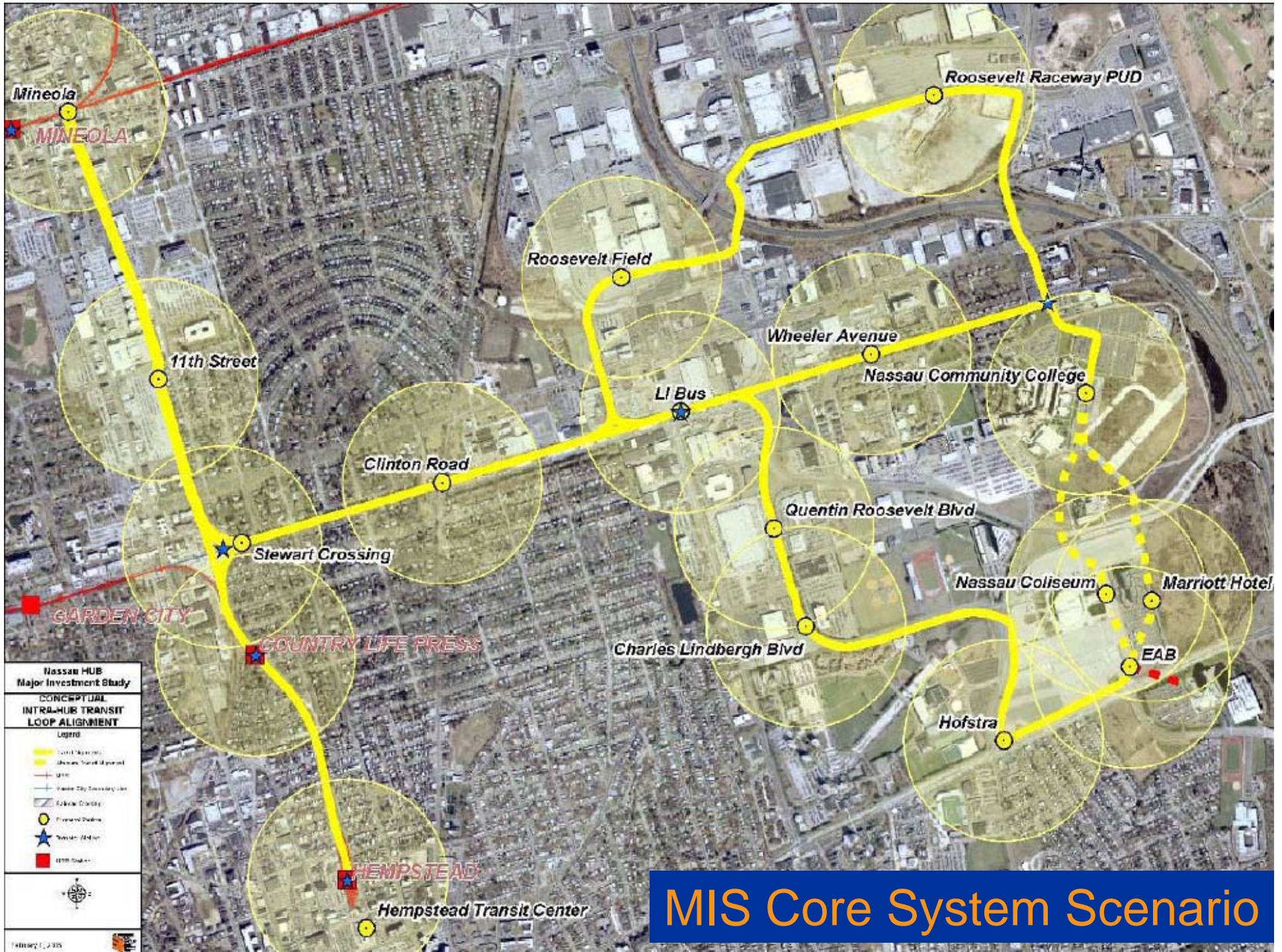


## Where Did The MIS Leave Off?

- 3 Transit Options:
  - BRT – Bus Rapid Transit
  - LRT – Light Rail Transit
  - AGT – Automated Guideway Transit
- Core System Scenario For Each Option
- Full System Scenario For Each Option
- Alternatives to be Revisited







# MIS Core System Scenario





LIVABLE COMMUNITIES  
THROUGH SUSTAINABLE TRANSPORTATION

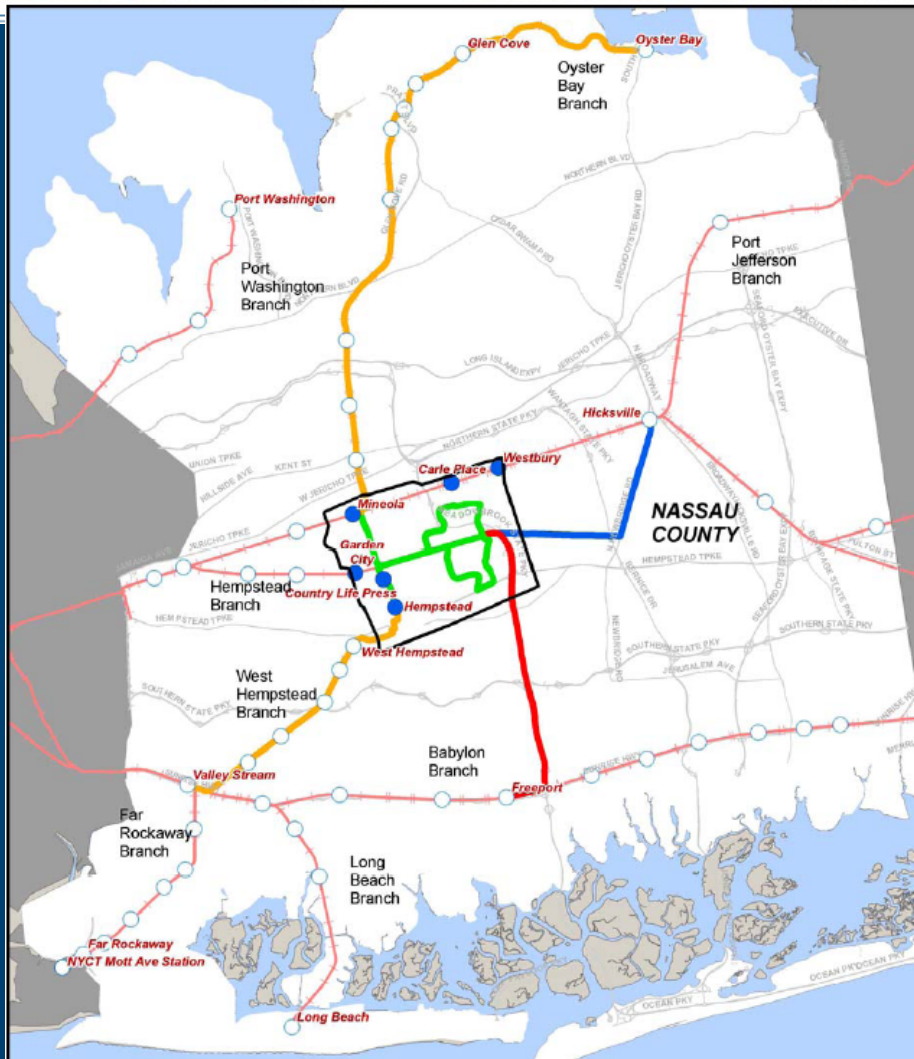
# THE NASSAU HUB STUDY

ALTERNATIVES ANALYSIS / ENVIRONMENTAL IMPACT STATEMENT



## MIS Full System Scenario

- MIS Core System
- Proposed Connection to Hicksville
- Proposed Connection to Freeport
- Modified LIRR Alignments





## What Was Learned From The MIS?

- Traffic Congestion Will Only Get Worse If Nothing Is Done To Address The Problem
- Transit Improvements Could Help Address Mobility Problems And Shape Economic Development Opportunities
- Federal “New Starts” Funding Could Potentially Be Used To Help Implement Improvements
- Further Investigation In An AA / EIS Is Needed To Refine The Alternatives, Identify A Set Of The Most Promising Options And Be Eligible For Federal Funds
- MIS Findings are a Starting Point for this Study



THE  
**NASSAU HUB STUDY**

---

ALTERNATIVES ANALYSIS / ENVIRONMENTAL IMPACT STATEMENT



# The Alternatives Analysis



- What Are The Problems To Be Addressed?
- What Is The Study Area?
- What Potential Alternatives Should Be Studied?
- How Will The Alternatives Be Evaluated?
- How Will The Public Be Involved?
- What Is The Schedule?



# What Are The Problems To Be Addressed?



- Increasing Levels Of Roadway Congestion
- Missing Or Incomplete Transportation Linkages
- Disjointed Land Use Patterns
- Limited North-South Transit Connectivity
- Prevalence of Automobile-Oriented Land Use Development
- Lack of Transportation Options to Stimulate Economic Development





THE  
**NASSAU HUB STUDY**

---

ALTERNATIVES ANALYSIS / ENVIRONMENTAL IMPACT STATEMENT



# What Is The Study Area?





**PRIMARY STUDY AREA MAP**





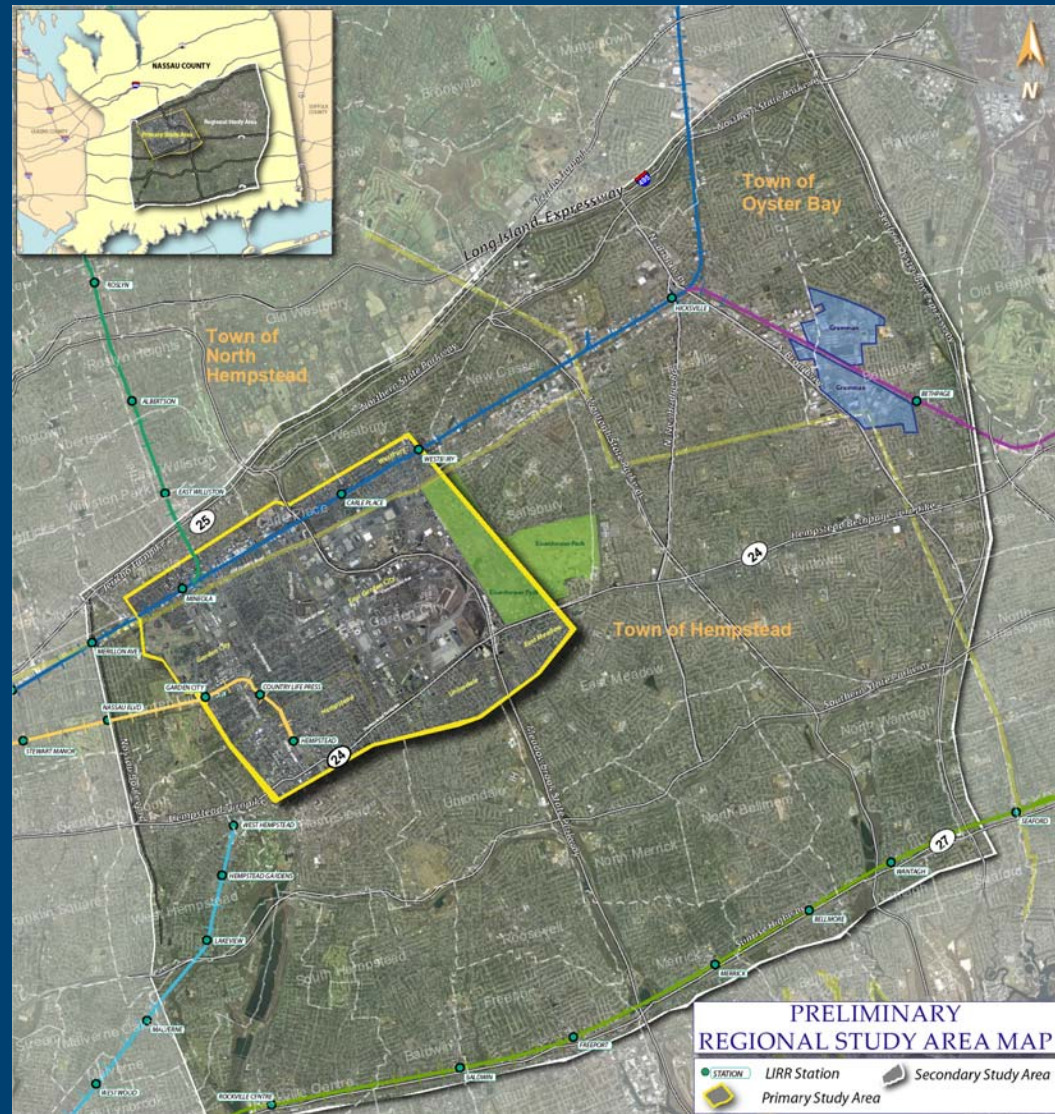
LIVABLE COMMUNITIES  
THROUGH SUSTAINABLE TRANSPORTATION

# THE NASSAU HUB STUDY

ALTERNATIVES ANALYSIS / ENVIRONMENTAL IMPACT STATEMENT



## Preliminary Regional Study Area





# What Potential Alternatives Should Be Studied?



- Various Modes / Technologies / Routes
  - Bus
  - Rail
  - Bicycle / Pedestrian
  - Transportation Systems Management
- Coordinated Land Use





# How Will The Alternatives Be Evaluated?





## Initial Study Goals

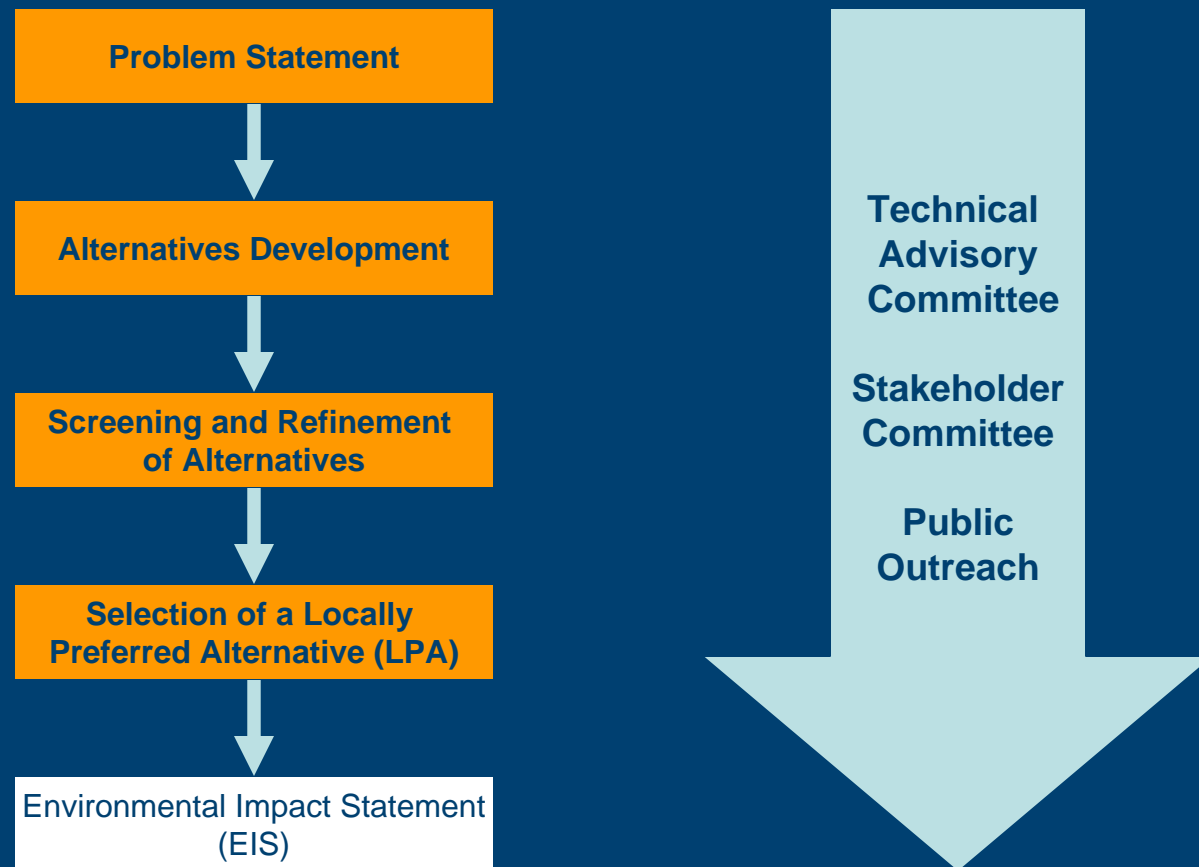
- Improve Mobility
- Enhance Economic Development / Create Jobs
- Financially Implementable
- Effectively Use Public Funds
- Environmentally Sound







## Work Plan





## General Factors for Evaluating Alternatives

- Community Input
- Potential Ridership
- Capital Costs
- Operation and Maintenance Costs
- Travel Time Savings
- Environmental Benefits / Impacts
- Financial Viability



# Understanding Travel in the Hub

- Transit User Survey
- Stated Preference Survey
- Predominant Travel Patterns
- Modes
- Times of Day
- Areas of Congestion



# How Will The Public Be Involved?



- Technical Advisory Committee (TAC)
- Stakeholder Committee
- Public Meetings / Open Houses / One-on-One Meetings
- Printed Media, Fact Sheets, Handouts
- Email Notifications / Distributions
- Study Website





LIVABLE COMMUNITIES  
THROUGH SUSTAINABLE TRANSPORTATION

# THE NASSAU HUB STUDY

ALTERNATIVES ANALYSIS / ENVIRONMENTAL IMPACT STATEMENT



HOME

ABOUT / FAQ

STAY INVOLVED

STUDY RESOURCES

CONTACTS  
& COMMENTS

LINKS

GLOSSARY

## WELCOME TO THE NASSAU HUB STUDY WEBSITE

Brief statement describing the website and project highlights

- [www.nassauhub.com](http://www.nassauhub.com)

### UPCOMING EVENTS

- Event 1
- Event 2

### GET TO KNOW THE STUDY AREA

[Click Map](#)

### WHATS NEW

- Latest Info
- Quick Links to Meeting Summaries
- Newspaper Articles

### JOIN OUR MAILING LIST\*

Name

Email

\* Names and addresses provided for this study will only be used for the purpose of providing study information and will not be used beyond this purpose.





# What Is The Schedule?





**2010 / 2011**

<b>TASK</b>	Spring	Summer	Fall	Winter	Spring
Develop Detailed Problem Statement		█			
Hold Initial Outreach Meetings		█			
Travel Demand Forecasting		████████████████████			
Long List of Alternatives		██████████			
Screen Alternatives			██████		
Short List of Alternatives				█	
Analyze / Evaluate Alternatives				████████████████	
Select Locally Preferred Alternative					█



## Looking Ahead

- Refine Problem Statement, Purpose And Need And Goals And Objectives for Discussion at Next Stakeholder Committee Meeting
- Develop Alternatives And Evaluation Criteria for Discussion at Next Stakeholder Committee Meeting
- Hold Public Meeting this Summer
- Next TAC and Stakeholder Committee Meetings in Late Summer



THE  
**NASSAU HUB STUDY**

---

ALTERNATIVES ANALYSIS / ENVIRONMENTAL IMPACT STATEMENT



# Questions & Answers



# Questions & Answers

## Role of Stakeholder Committee

- Liaison / Outreach Between Study Team and Member Organizations / Communities
- Review Study Materials and Provide Ongoing Input to Nassau County
- Meet at Key Milestones Throughout the Study



# Questions & Answers

## Study Area Problems

- Increasing Levels Of Roadway Congestion
- Missing Or Incomplete Transportation Linkages
- Disjointed Land Use Patterns
- Limited North-South Transit Connectivity
- Prevalence of Automobile-Oriented Land Use Development
- Lack of Transportation Options to Stimulate Economic Development



# Questions & Answers

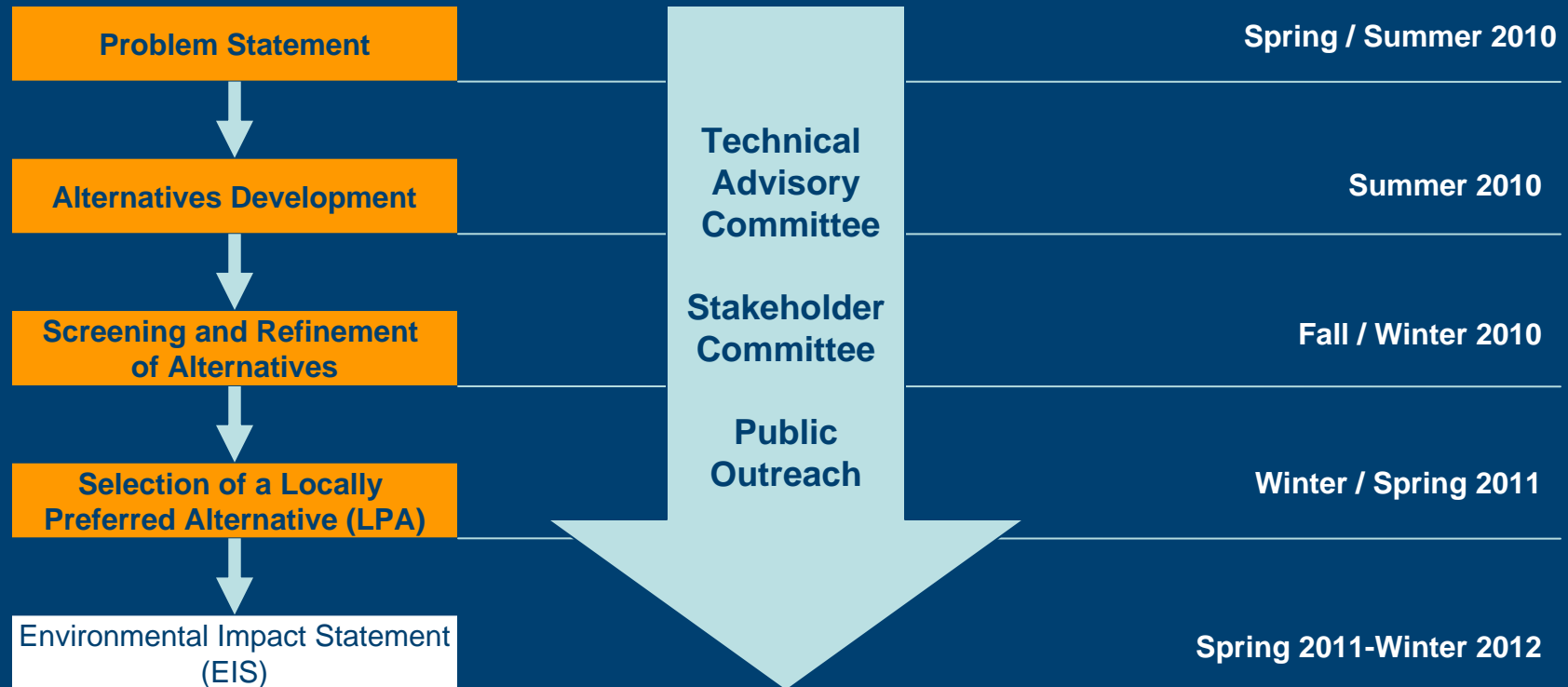
## Initial Study Goals

- Enhance Economic Development / Create Jobs
- Improve Mobility
- Financially Implementable
- Effectively Use Public Funds
- Environmentally Sound



# Questions & Answers

## Work Plan / Schedule







LIVABLE COMMUNITIES  
THROUGH SUSTAINABLE TRANSPORTATION

# THE NASSAU HUB STUDY

ALTERNATIVES ANALYSIS / ENVIRONMENTAL IMPACT STATEMENT



# Stakeholder Committee Meeting

July 14, 2010

